

# Top Shelf

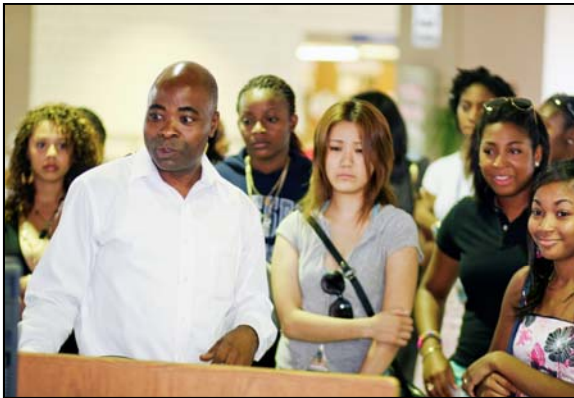
The Newsletter of the Robert W. Woodruff Library  
of the Atlanta University Center

October 2006

Volume 2, No. 2



## New Students and New Faculty Attend RWWL Orientation



Reference Librarian **Olafare Ijimmyowa** gives new **Spelman** students an overview of Library services during the school's orientation on August 18.

In the months of August and September, more than 1,300 students and faculty representing the four Atlanta University Center (AUC) campuses participated in six orientation sessions sponsored by the Robert W. Woodruff Library of the Atlanta University Center.

Orientation evaluations

revealed an overwhelmingly positive response to the programs, Library staff and the Library facilities.

Student orientations were held on August 18 (**Morehouse**), August 19 (**Spelman**), August 21 (**CAU**) and September 11 (**ITC**), with activities tailored

to meet the expressed needs of each school. New AUC Faculty orientations were held on August 14 and August 18. New faculty members received library information packets, were given the opportunity to meet their discipline-specific librarian, and participated in a hands-on orientation to RWWL online faculty services.

For more details on faculty services offered by RWWL, go to [www.auctr.edu](http://www.auctr.edu) and click on "Services".



*Spelman* students show their approval after completing their orientation.

*(View more orientation photos on page 3.)*

## NOW OPEN: RWWL "Research Rescue Room"

Are you drowning in a sea of information?

Does your research strategy need CPR? Find help in the Woodruff Library's "Research Rescue Room"!

This month, Woodruff's **Information and Research Services Department** jump-started a "Research Rescue



Room" service. The "Research Rescue Room" operates Monday–Thursday evenings from 7-9 p.m. in Training Lab 1 on the Library's lower level. No appointment necessary—the "Research Rescue Room" is staffed by a reference librarian to assist Library users in:

- ♦ Identifying main ideas and concepts

*(Research Rescue—continued on page 3)*

### INSIDE THIS ISSUE:

<i>Morehouse Football Team "Huddles" in the Library</i>	2
<i>Information Literacy Pilot Programs Begin</i>	2
<i>RWWL Orientation 2006 Photo Gallery</i>	3
<i>Library Training Opportunities</i>	4
<i>COMING SOON: LibQual User Survey</i>	4

## Morehouse Football Team “Huddles” in the Woodruff Library



Members of the **Morehouse College** football team learn more about RWWL services during a librarian-led instructional session. The training was part of the team's new group study program held Monday-Thursday evenings in the Library.

This semester, the **Morehouse College** football team is “huddling” at the Woodruff Library.

Since August 28, the team has been studying as a group every Monday-Thursday from 7:30-9 p.m. Accompanied by **Coach Michael Grant** and team tutors, the group studies in the North Wing quiet zone on the Library's Upper Level. In addition, during the 90-minute study session, one-on-one tutoring takes place in a group study room on the Upper Level.

Showing her team spirit by

wearing a Morehouse football t-shirt, RWWL Information Literacy Librarian **Yolanda Gilmore Bivins** kicked off the first “study huddle” with an overview of the Library Web site, databases and research techniques.

Bivins said the week night study group is a great game plan for success – it allows students to receive academic assistance in a quiet setting surrounded by the research resources they need, while translating their on-the-field camaraderie into an enjoyable learning experience with teammates.

Now, that's *really* something we can all cheer about!

## “E-reserves” Pilot Begins This Fall

This fall the Woodruff Library begins a semester-long “e-reserves” pilot program that will allow faculty to put course materials on electronic reserves (e-reserves) and students to retrieve them via the Internet from any location.

Using the new service, faculty can submit journal articles and other selected course materials to Library staff, who will then scan and post the resulting PDF documents to the course reserves listings in the Library's online catalog. Using their Library remote access accounts, students can read or print out the materials from any computer with Internet access.

As with traditional reserves, all materials placed on e-reserves must comply with copyright laws. However, when needed, library staff can assist faculty in obtaining clearance to use copyrighted materials for e-reserves.

Faculty and students interested in the pilot program should contact **Monica Riley**, E-Reserves Pilot Program Coordinator, at [404-978-2025/mriley@auctr.edu](mailto:404-978-2025/mriley@auctr.edu), or **William Holt**, Head of Circulation, at [404-978-2048](tel:404-978-2048)/[weholt@auctr.edu](mailto:weholt@auctr.edu).

## Information Literacy Pilot Underway in AUC Classrooms

RWWL Librarians and Atlanta University Center faculty are partnering to deliver a pilot information literacy program to selected classes at member institutions. The goal of the pilot is to determine which methods provide the best approach to helping students build life-long learning skills.

Instituted this fall, the pilot program is part of an ongoing Information Literacy Initiative funded through an Andrew W. Mellon Foundation planning grant that was awarded to the Woodruff Library. As part of the initiative, Woodruff librarians have collabo-

rated with AUC faculty to develop and implement an information literacy program designed to enhance skills needed to find, retrieve, analyze and use information.

Selected classes from each of the AUC member institutions participating in the pilot program, include:

- ◆ **CAU**—CIS 100 (700 students)
- ◆ **ITC** – Foundations for Ministry (100 students)
- ◆ **Spelman** – Chemistry 101 (35 students) and English 103 (23 students)
- ◆ **Morehouse** – English 250 (22 students)

Each pilot student will take a pre-test assessing current information-seeking skills, complete the “InfoPower” online information literacy tutorial and take a post-test. Students also will participate in special coaching sessions with librarians to further enhance information utilization skills.

RWWL Information Literacy Librarian **Yolanda Gilmore Bivins** says additional training opportunities for faculty and students will be offered throughout the year. Learn more about planned training and/or schedule Library instruction sessions by contacting Bivins at [404-978-2132](tel:404-978-2132) or [ygbivins@auctr.edu](mailto:ygbivins@auctr.edu).

## Photo Gallery: RWWL Orientation 2006



Security Officer **James Jackson** helps a new CAU student purchase a copy/print card during the August 21 Library Orientation.



Information Literacy Librarian **Yolanda Gilmore Bivins**, (standing) gives new ITC students a Library overview during a September 18 orientation session.



RWWL Government Documents Coordinator **Chad Nathaniel** (left) talks with a member of the **Morehouse College Class of 2010**.



New CAU students register for the barcodes that provide access to Woodruff Library services. Nearly 500 CAU students participated.



CAU and ITC faculty receive an overview of the Library's Web site, electronic resources and services during RWWL Orientation 2006.

## Automated Services Get the Best Books to You Faster!



With the Woodruff Library's new automated services, **Tiffany Camp** (right) and **Elaine Terry** (left), **Access & Technical Services**, can have books on shelf for you in minutes.

**T**hanks to a new Approval Plan with Yankee Book Peddler, Woodruff Library users are now getting access to the best books quicker.

Instead of waiting for librarians to order books, Yankee now automatically ships titles recommended by the top reviewers and library journals. This puts RWWL "first in line" at the bookstore and ensures that you get the hot new books you need for your research faster.

Those new books don't "chill out" waiting to be cataloged and processed. RWWL's new automated book processing operations help us get them on the shelf in record time. Now, all books are ordered online and come with electronic files that can be downloaded directly into the Library's automation system and available to you in the WOODI online catalog. For even faster delivery-to-shelf turnaround, new books also come with stamps and call number labels, allowing immediate shelving within minutes of their arrival.

The new Book Approval Plan and automated processing system are two more ways we're working to be your *first and best choice* for information!


## *(Research Rescue—continued from page 1)*

- ◆ Formulating effective online research strategies
- ◆ Determining appropriate types of information required to address a specific research topic
- ◆ Exploring unique features of databases or other electronic resources available at the Woodruff Library
- ◆ Evaluating information sources
- ◆ Citing information sources

So, don't stumble along the information highway ... reach for a lifeline at the RWWL "Research Rescue Room"! Call **404-978-2067** or email: [AskRef@aucr.edu](mailto:AskRef@aucr.edu) for more information.

## Library Training Opportunities

**NetLibrary Faculty Training – Wednesday, October 18, from 2-3:00 p.m.** – RWWL will sponsor an in-depth faculty training session on the use of

 NetLibrary as a tool for teaching and learning. The NetLibrary resource provides users with 24-hour online access to more than 41,000 e-Book titles from some of the world's most recognized academic presses, including Oxford University Press, University of California Press, Johns Hopkins University Press, Harvard Business School Press, Princeton University Press and Columbia University Press.

Faculty and students can also arrange NetLibrary training sessions for individuals, study groups or classes. Call the Library Reference Desk at 404-978-2067 or email: [askref@auctr.edu](mailto:askref@auctr.edu) and learn how to make NetLibrary work for you!

### **JSTOR/ARTstor Training Initiative for Faculty – Throughout the months of October and November**

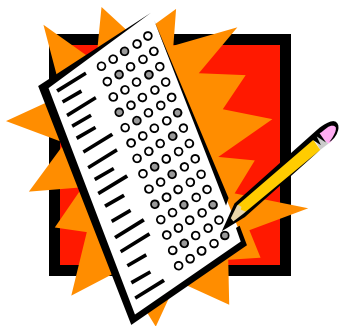
– Building on the success of last year, the Woodruff Library will again offer JSTOR/ARTstor training for faculty. The program includes hands-on database training provided by RWWL librarians, faculty and librarian collaborations on lesson plan development, implementation of those lesson plans and program assessment. **The initiative begins on Thursday, October 19, and runs through November.** To participate in or learn more about the program, contact **Yolanda Gilmore Bivins** at 404-978-2132 or [ygbivins@auctr.edu](mailto:ygbivins@auctr.edu).

## At the Library...

- ♦ **“The House of Alpha: The Centennial Exhibit of Alpha Phi Alpha Fraternity, Inc.,”** a national exhibition chronicling the first 100 years of Alpha Phi Alpha Fraternity, Inc., opened to rave reviews on Tuesday, September 19, and has been viewed by a steady stream of Library visitors. The exhibit, on display in the Virginia Lacy Jones Exhibition Hall (Upper Level), runs through November 3.
- ♦ RWWL hosted the **1906 Atlanta Race Riot Centennial Remembrance Weekend Symposium** on Saturday, September 23. The day-long symposium was held to commemorate the 100th anniversary of the race riot in which 27 people (mostly African American) lost their lives. Events are sponsored by a citywide coalition of educational and community organizations. To learn more visit: [www.1906atlantaraceriot.org](http://www.1906atlantaraceriot.org).
- ♦ **“Student Activism in the Civil Rights Movement: How You Can Make a Difference,”** was the focus of a Tuesday, October 3, panel discussion held at the Library in honor of the 20<sup>th</sup> anniversary of the historic *Eyes on the Prize* documentary series. **Dr. Cheryl Gooch**, Associate Dean, CAU Division of Communications Arts, moderated. Featured panelists were Juan Williams, author of the *Eyes on the Prize* companion book and NPR commentator, and **Morehouse College** alumni Lonnie C. King, Jr., and Charles Black, founders and leaders of the Atlanta's student movement in the 1960s. King and Black vividly recalled their experiences as students in the Civil Rights Movement and encouraged AUC students to take action and be catalysts for change.

## COMING SOON...LibQUAL User Survey!

**H**ow well is the Robert W. Woodruff Library meeting the needs of AUC students, faculty and staff? You can help us answer this question. In Spring 2007, the Library will be undertaking a comprehensive web-based survey of library service quality.



The survey, known as LibQUAL+™, assesses satisfaction with library collections, services, access and space. All faculty, students and staff will be invited to submit their views of the Woodruff Library through this online survey.

Surveys are an important method by which the Library can collect information and feedback from the AUC community. The data will

be used to set priorities, establish strategic planning initiatives and address service needs (e.g. eResources, the new shuttle service and the 24-hour pilot are the direct result of your feedback from our last survey in 2005). All survey respondents will be eligible for Library-sponsored prize drawings, our way of saying thanks for your participation. Stay tuned!

## Top Shelf

*Published four times a year  
for library users*



Robert W. WOODRUFF LIBRARY  
Atlanta University Center

111 James P. Brawley Drive, SW  
Atlanta, Georgia 30314  
Phone: 404-978-2000  
Fax: 404-577-5158  
[www.auctr.edu](http://www.auctr.edu)

**CEO/Library Director**  
Loretta Parham

**Editor & Copywriter**  
Adrian B. Carver  
E-mail: [acarver@auctr.edu](mailto:acarver@auctr.edu)